



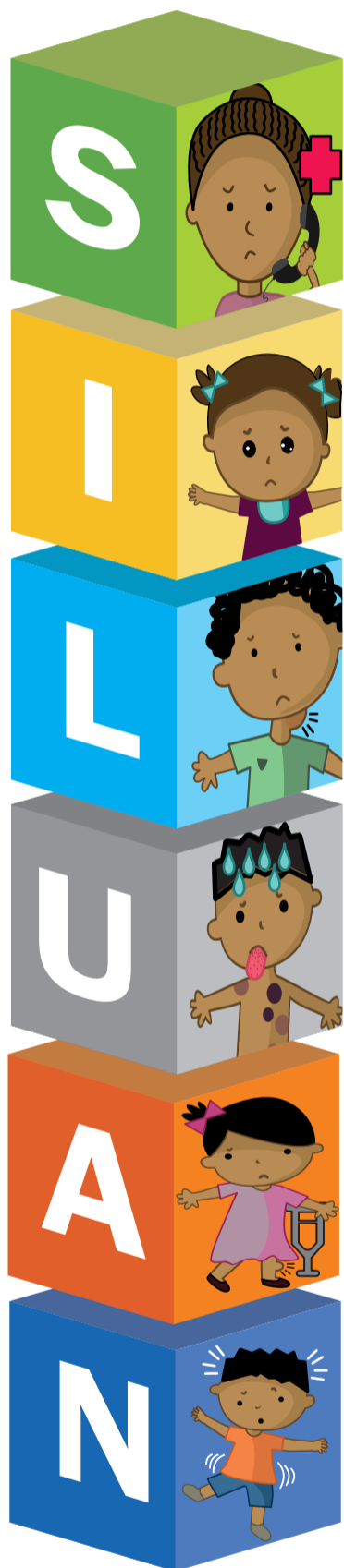
CHOC

Childhood Cancer Foundation
South Africa

"Keeping more than hope alive"

To improve the survival rate, more children and teens need to be diagnosed at early stages and treated by a paediatric oncologist.

SILUAN'S EARLY WARNING SIGNS OF CHILDHOOD CANCER



SEEK

Medical help early for persistent symptoms.

EYE

White spot in the eye, new squint, new blindness, bulging eyeball.

LUMP

Abdomen and pelvis, head and neck, limbs, testes and glands.

UNEXPLAINED

Prolonged fever over two weeks, loss of weight, pallor, fatigue, easy bruising or bleeding.

ACHING

Bones, joints, back and easy fractures.

NEUROLOGICAL SIGNS

Change or deterioration in walk, balance or speech, regression of milestones, headache for more than a week with or without vomiting, enlarging head.

TO GET **HELP:**

If you detect any of the early warning signs in a child, please contact the CHOC helpline.

📞 086 111 3500 ✉ headoffice@choc.org.za

📘 CHOC Childhood Cancer Foundation SA 🐦 @CHOCchildhoodSA



health

Department:
Health
REPUBLIC OF SOUTH AFRICA



Call the CHOC Helpline
(during office hours)

0800 333 555

CHOC is registered in terms of the Income Act of 1992 as a Public Benefit Organisation, PBO 930009261 NPO Reg 001-338NPO

www.choc.org.za

